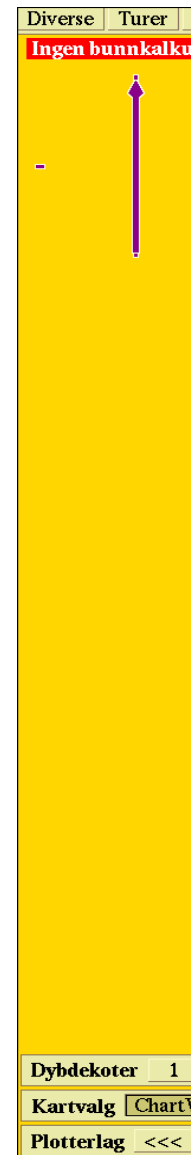


Søknad nytt anlegg/flåte kon

Hjørne Korrdinater ytterpunkter anlegg merket røde

A1	67*39.241	N	15*06.905	Ø
A2	67*39.292	N	15*06.982	Ø
A3	67*39.344	N	15*07.060	Ø
A4	67*39.395	N	15*07.139	Ø
A5	67*39.447	N	15*07.217	Ø
A6	67*39.498	N	15*07.296	Ø
A7	67*39.550	N	15*07.374	Ø
A8	67*39.601	N	15*07.452	Ø
B1	67*39.212	N	15*07.038	Ø
B2	67*39.263	N	15*07.116	Ø
B3	67*39.314	N	15*07.194	Ø
B4	67*39.366	N	15*07.273	Ø
B5	67*39.417	N	15*07.351	Ø
B6	67*39.469	N	15*07.430	Ø
B7	67*39.520	N	15*07.508	Ø
B8	67*39.571	N	15*07.587	Ø
C1	67*39.182	N	15*07.174	Ø
C2	67*39.233	N	15*07.252	Ø
C3	67*39.284	N	15*07.330	Ø
C4	67*39.336	N	15*07.409	Ø
C5	67*39.387	N	15*07.487	Ø
C6	67*39.439	N	15*07.565	Ø
C7	67*39.490	N	15*07.643	Ø
C8	67*39.541	N	15*07.722	Ø

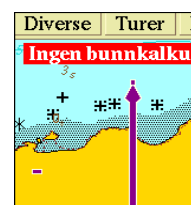


Midtkoordinat anlegg:

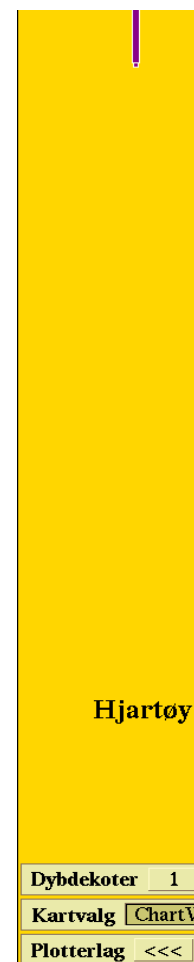
67*39.391 **N** **15*07.312** **Ø**

Anker koordinater anleggs fortøyninger:

Anker-line 1	67*39.282	N	15*06.721	Ø
Anker-line 2	67*39.344	N	15*06.749	Ø
Anker-line 3	67*39.398	N	15*06.815	Ø



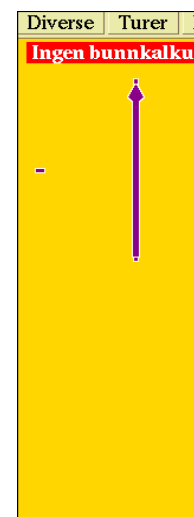
Anker-line 4	67*39.452	N	15*06.883	Ø
Anker-line 5	67*39.502	N	15*06.973	Ø
Anker-line 6	67*39.545	N	15*07.086	Ø
Anker-line 7	67*39.594	N	15*07.178	Ø
Anker-line 8	67*39.643	N	15*07.269	Ø
Anker-line 9	67*39.690	N	15*07.588	Ø
Anker-line 10	67*39.703	N	15*07.658	Ø
Anker-line 11	67*39.744	N	15*07.802	Ø
Anker-line 12	67*39.771	N	15*08.014	Ø
Anker-line 13	67*39.782	N	15*08.101	Ø
Anker-line 14	67*39.769	N	15*08.225	Ø
Anker-line 15	67*39.351	N	15*08.581	Ø
Anker-line 16	67*39.298	N	15*08.500	Ø
Anker-line 17	67*39.245	N	15*08.418	Ø
Anker-line 18	67*39.193	N	15*08.340	Ø
Anker-line 19	67*39.144	N	15*08.265	Ø
Anker-line 20	67*39.090	N	15*08.182	Ø
Anker-line 21	67*39.039	N	15*08.105	Ø
Anker-line 22	67*38.990	N	15*08.031	Ø
Anker-line 23	67*38.884	N	15*06.911	Ø
Anker-line 24	67*38.878	N	15*06.711	Ø
Anker-line 25	67*38.890	N	15*06.635	Ø
Anker-line 26	67*38.902	N	15*06.536	Ø
Anker-line 27	67*39.088	N	15*06.697	Ø
Anker-line 28	67*39.097	N	15*06.660	Ø



Anker koordinater på flåte Nr. 1

Midtkoordinat Flåte 1.

	67*39.402	N	15*06.919	Ø
Hjørne G1:	67*39.394	N	15*06.895	Ø
Hjørne G2:	67*39.414	N	15*06.915	Ø
Hjørne G3:	67*39.410	N	15*06.942	Ø
Hjørne G4:	67*39.390	N	15*06.922	Ø
Anker-line F1	67*39.461	N	15*06.894	Ø
Anker-line F2	67*39.444	N	15*07.052	Ø
Anker-line F3	67*39.405	N	15*07.076	Ø
Anker-line F4	67*39.361	N	15*07.031	Ø



Anker-line F5	67*39.337	N	15*06.945	Ø
Anker-line F6	67*39.382	N	15*06.813	Ø
Anker-line F7	67*39.397	N	15*06.812	Ø
Anker-line F8	67*39.433	N	15*06.854	Ø

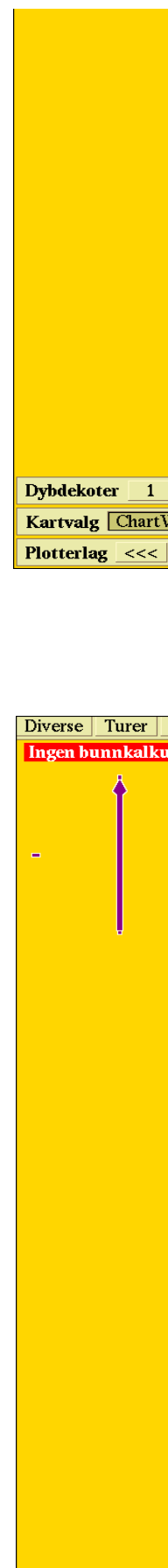
Anker koordinater på flåte Nr. 2

Midtkoordinat Flåte 2.

	67*39.440	N	15*07.093	Ø
Hjørne E1:	67*39.434	N	15*07.066	Ø
Hjørne E2:	67*39.452	N	15*07.095	Ø
Hjørne E3:	67*39.447	N	15*07.120	Ø
Hjørne E4:	67*39.428	N	15*07.091	Ø
Anker-line D1	67*39.453	N	15*06.888	Ø
Anker-line D2	67*39.498	N	15*06.974	Ø
Anker-line D3	67*39.569	N	15*07.181	Ø
Anker-line D4	67*39.532	N	15*07.346	Ø
Anker-line D5	67*39.389	N	15*07.667	Ø
Anker-line D6	67*39.274	N	15*07.489	Ø
Anker-line D7	67*39.272	N	15*06.975	Ø
Anker-line D8	67*39.338	N	15*06.815	Ø

Storskjæret - Steigen
02.08.2021

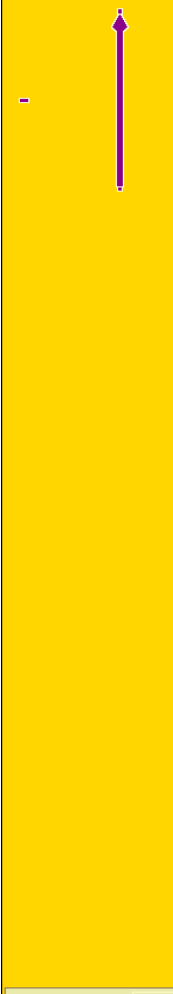
Frode Holmvåg
Cermaq Norway as



Dybdekoter 1
Kartvalg Chart
Plotterlag <<<

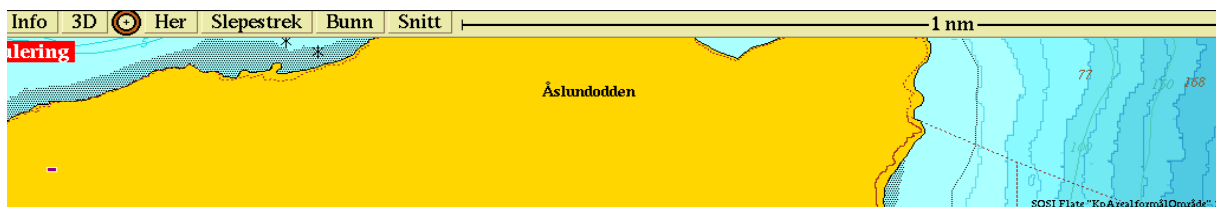
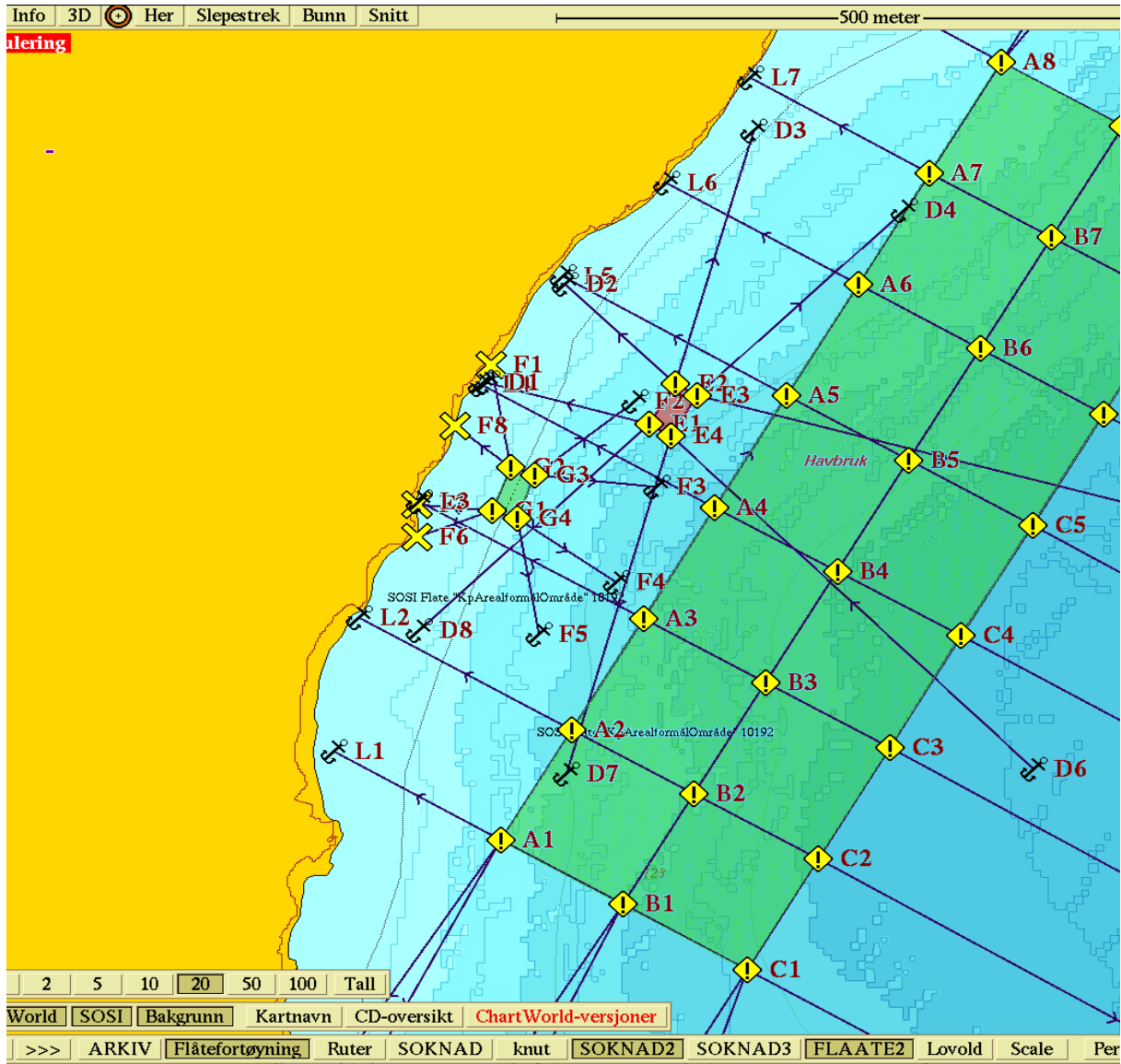
Diverse Turer

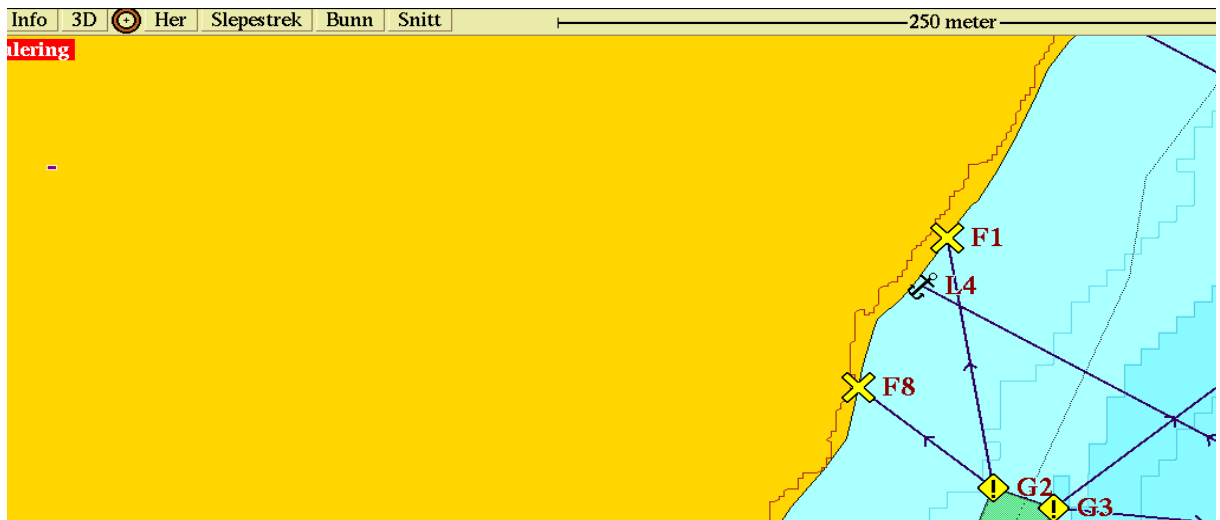
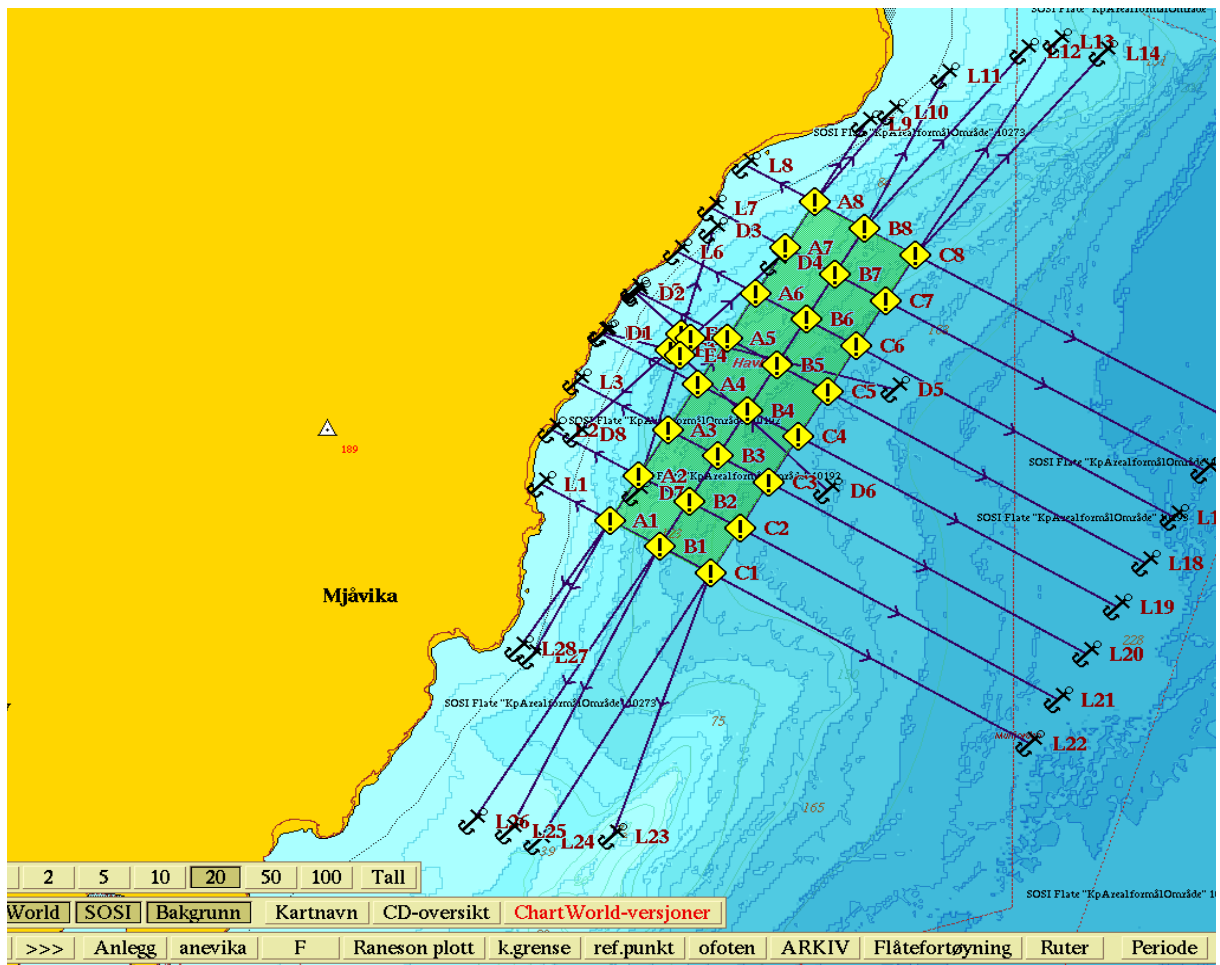
Ingen bunnkalku

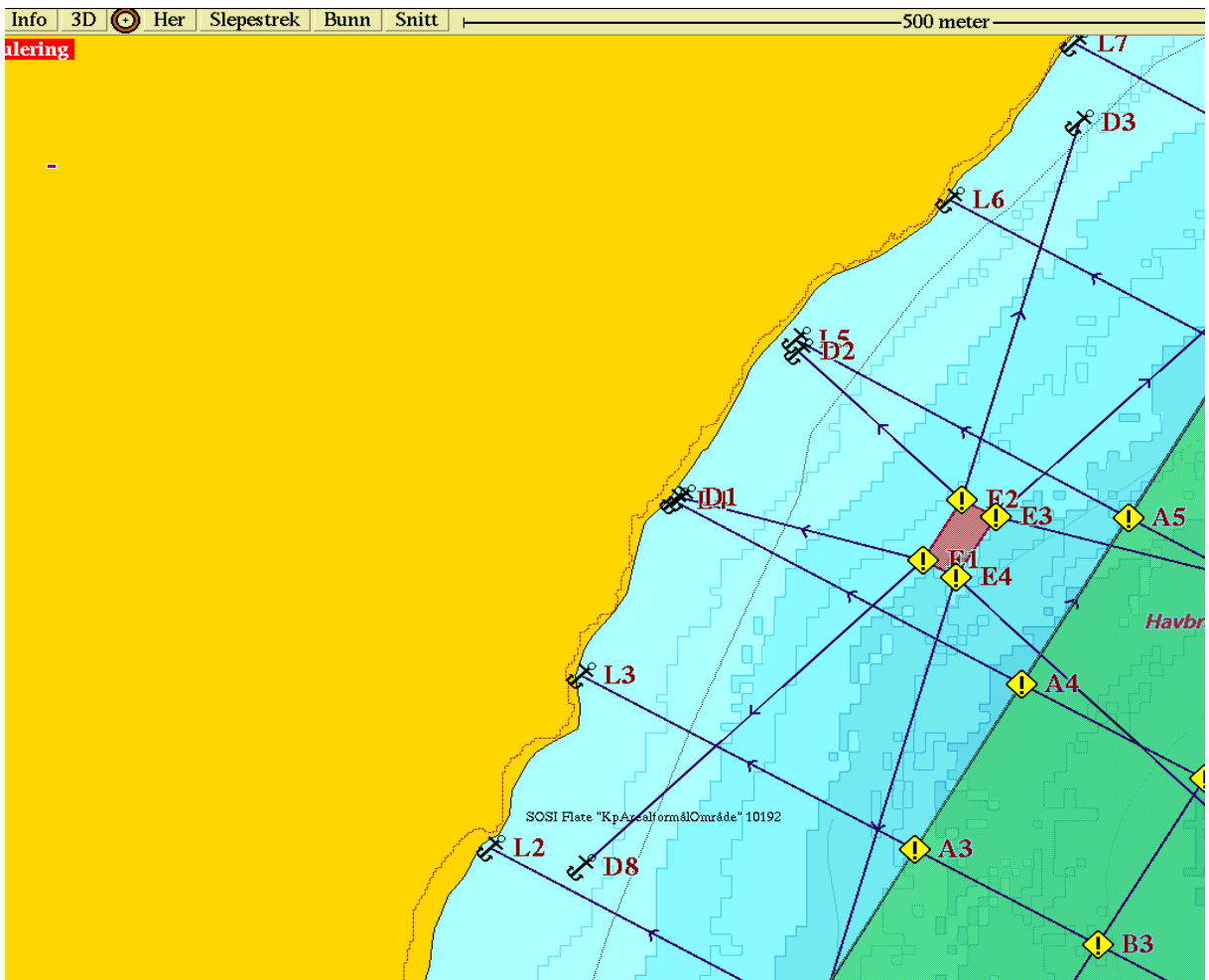
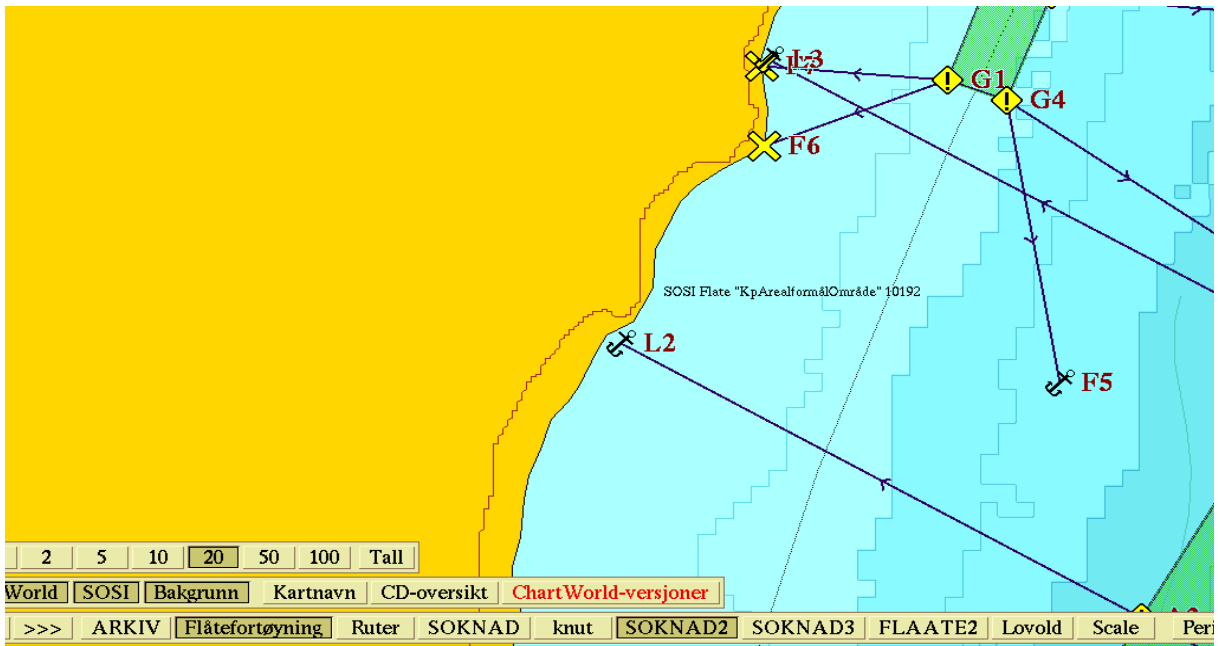


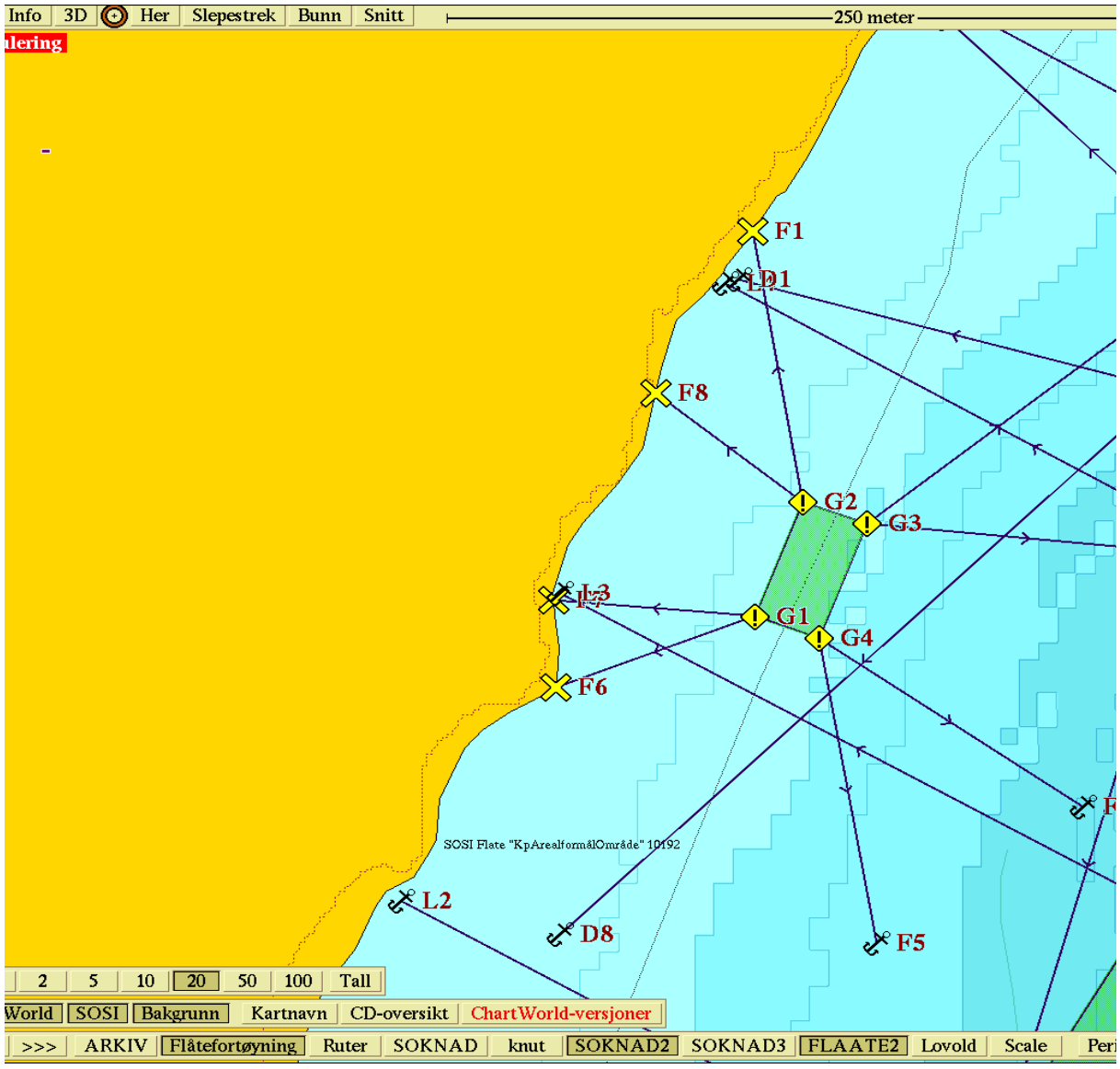
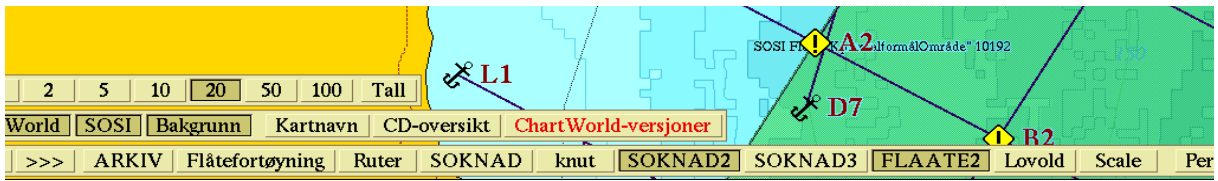
Dybdekoter 1
Kartvalg Chart
Plotterlag <<<

Figurasjon med GPS koordinater ramme, flåter og anker punkter loka









Malitet 13931 Hjartøy Ø Steigen kommune august 2021

